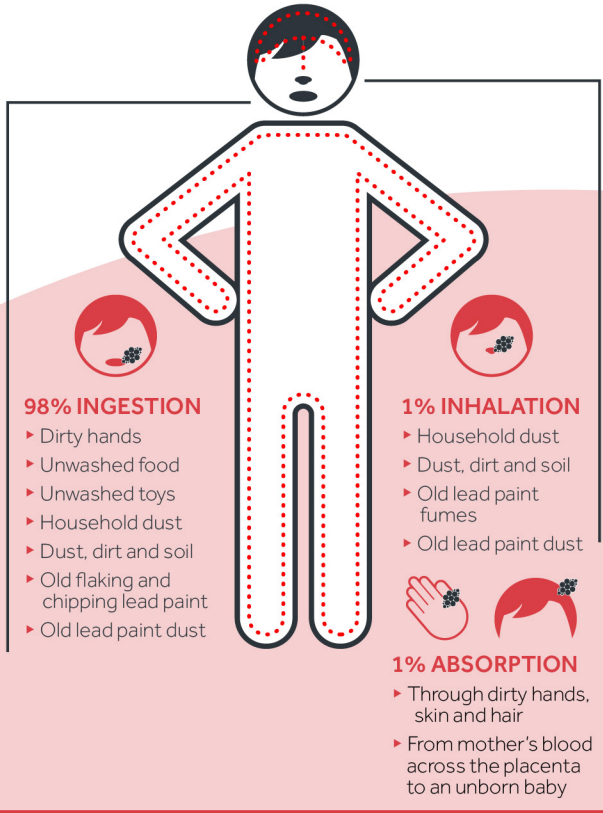


Lead is a metal that has been mined in Mount Isa for many years. It's in the dust, dirt and soil.

Our dry climate means lead dust gets into everything, via the air. It can also be found in old lead paint, especially in homes built before 1970.

Lead does not belong in the human body. When it gets into our bodies, it can build up and make us sick.

MAIN EXPOSURE PATHWAYS OF LEAD



Lead can harm kids' brain development, which may cause behaviour and learning problems that can last a lifetime.

There are simple things you can do to reduce blood levels and prevent harm from lead. Living smart can reduce the amount of lead our kids are exposed to, helping them grow up strong and healthy.



Lead Alliance



Lead Alliance

Living Safely with Lead

Get in Touch

FREECALL
1800 457 547
leadalliance.com.au

- a** Old Courthouse
Isa Street, Mount Isa.
Queensland 4825
- e** admin@leadalliance.com.au

Clean safe.

Hygiene and cleaning.





Inside the home

Lead dust can settle on all the surfaces in your house. Sweeping and dry dusting causes lead dust to swirl around and settle on other surfaces.

- ▶ Use a damp cloth to wipe down kitchen surfaces before preparing food.
- ▶ Use a wet mop to clean floors rather than a broom.
- ▶ Use a damp cloth to wipe down furniture and toys.
- ▶ Empty the vacuum dust bag into the garbage bin, not into the garden.
- ▶ Seal cracks in the walls or ceiling to prevent old dust from getting into your home.
- ▶ Close your windows and doors on dry and windy days.

Cleaning smart can **reduce the amount of lead** our children are exposed to, helping them grow up strong and healthy.

When lead dust is in the air, it finds its way into our homes and places where children play. It is on our shoes and clothes, children's toys, play equipment, air conditioner vents and filters, and comes through windows and doors on windy days.

Young children are more likely than adults to ingest small amounts of lead because they put things in their mouths, crawl and play on the floor, touch dusty surfaces indoors and outdoors and touch their mouths.

Cleaning smart can reduce the amount of lead our children are exposed to, helping them to grow up strong and healthy.

- ▶ Wash their hands after playing outside or with pets.
- ▶ Wash hands before preparing or eating food.
- ▶ Wash pets, their toys and bowls regularly and make sure you brush them outside.



Around the home

It is best to sit children at the table or put babies in a high chair. If the children do sit on the floor - or on the ground outside - put down a clean sheet, towel or blanket first, to keep lead dust or dirt out of the food and off their hands.

Leave shoes outside and have a doormat.

After windy or dusty days, wipe down windows, door screens, verandahs, play equipment and other outdoor surfaces with a wet cloth or mop. Wash down outdoor play equipment with a hose.

